

STORM600

LASER ENGRAVING MACHINE



U.S.II-VI Optical Lenses

- U.S. optics from American Photonics. Proven 14% beam transmission improvement vs. other optics. High strength gold-plated lenses and aspheric focusing lenses made by II-VI Company, USA. High focus, high transmittance. The light beam in the transmission process to minimize the loss, light spot fine, uniform light, while ensuring the quality of the product, but also make the optical system can run for a long time, high efficiency and low cost.



Leadshine Stepper Motor

Lower noise, low vibration, running more smoothly, higher torque, higher acceleration, higher precision, better acceleration performance.

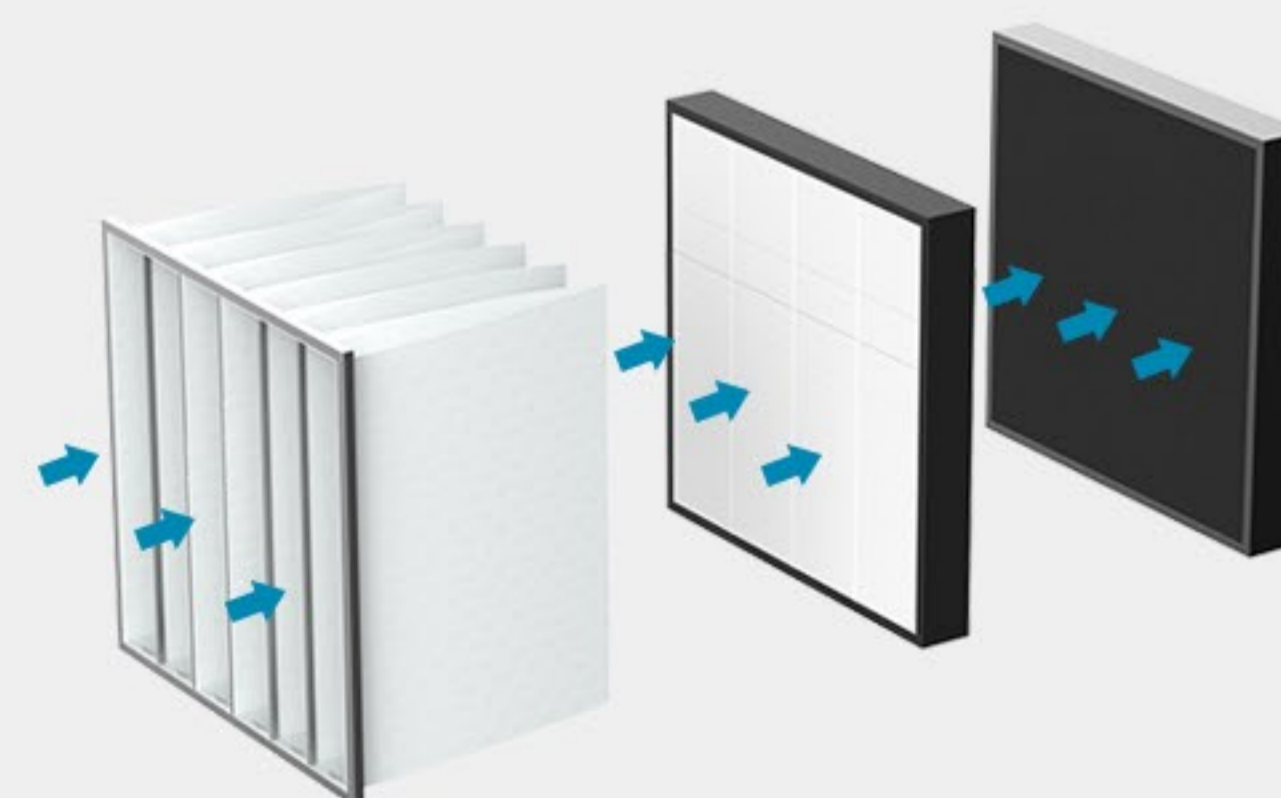
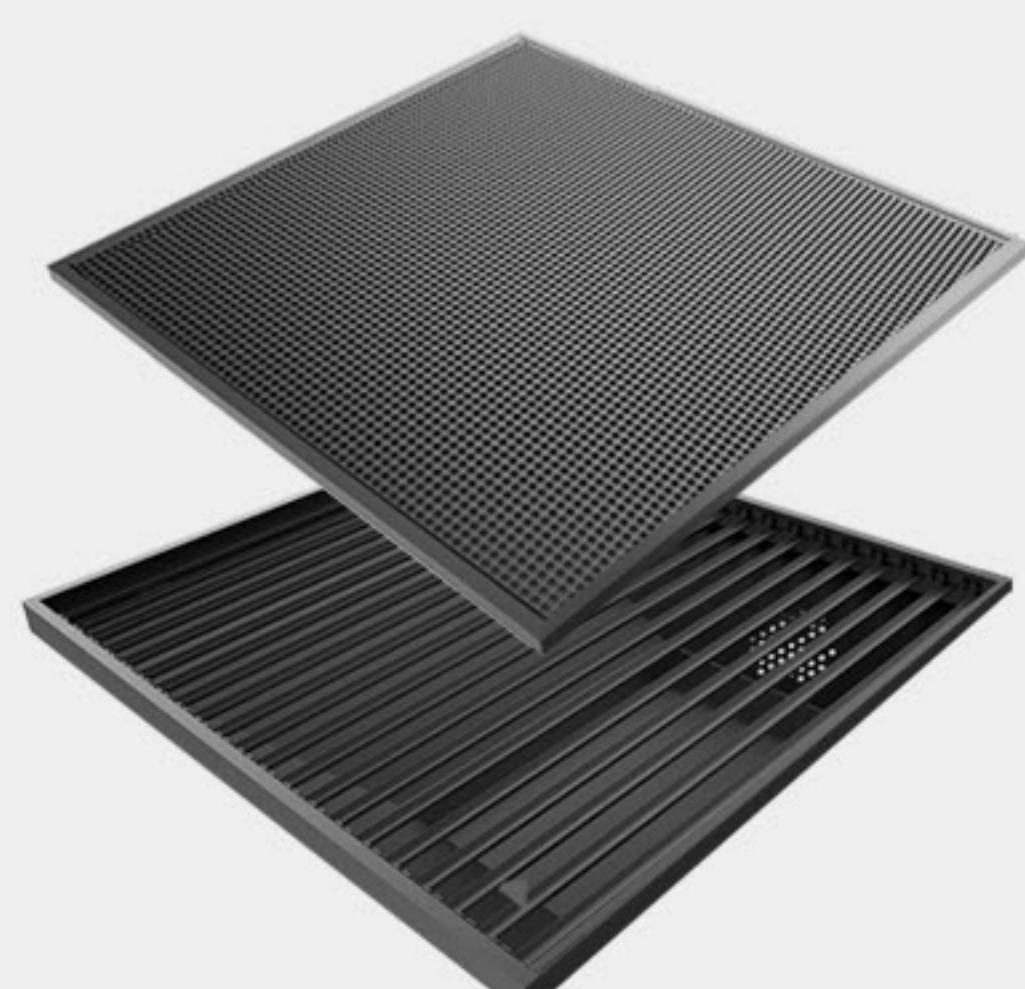
One Button Starting Fan

The fan can be started by one button. You can control the fan independently.



Double Platforms

Both knife blade and honeycomb platforms for cutting and engraving.



High Efficiency Air Filters

Environmentally friendly and pollution-free laser can be directly used indoors.

Tertiary filtration

- Filter large particles in bags.
- HEPA filtration larger than 0.03UM particle.
- Activated carbon adsorption system.

Technical Parameters

Laser - Type	Sealed CO2 laser tube
Laser Power	40w
Engraving Area	600mm x 400mm
Worktable	Manual up-down table
Whole Machine Size	950mm x 740mm x 450mm
Engraving Speed	0-48,000mm/min
Resetting Positioning Accuracy	±0.05mm
Working Voltage	AC 110-220V ±10%, 50-60Hz
Gross Power	1000W
Operating Temperature	0-45°C
Operating Humidity	5-95%
Minimum Shaping Character	English 1x1mm
Graphic Format Supported	BMP, PLT, DST, DXF, and AI
Driving System	stepper
Cooling Mode	Water-cooling and protection system
Auxiliary Equipments	Exhaust-fans, air-exhaust pipe
Controlling Software	DSP control system
Compatible Software	CorelDraw AutoCAD Photoshop

Industry Applications

Wood, organic glass, plastic, garments, paper, leather, rubber, and other nonmetal materials.



JINAN G.WEIKE SCIENCE & TECHNOLOGY CO.,LTD

In hi Tech square High-Tech Zone, Jinan,Shandong,China

E-mail: wkcutt@163.com

Hotline: 400-061-521

Fax: +86-0531-88912386